

**SPOK21**

## How to replace the NiMH-Battery

The battery is a package made of 4 cells and has a 3pol cable with plug.

The package must not be dismantled.

### Replacing the battery:

1. Turn SPOK21 to the bottom side.
2. Switch off the battery switch.

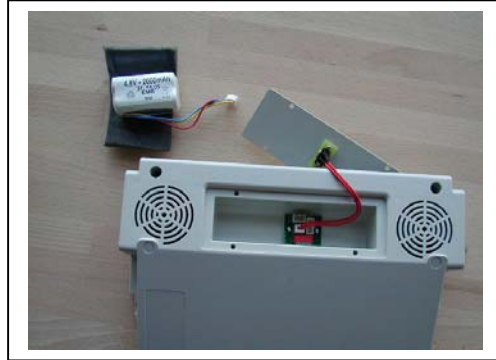


3. Remove the 4 screws of the battery lid.
4. Put the lid to the side, it is still connected with the unit..



5. Remove the battery from the battery compartment and pull the respective plug from the mounting.





6. Now place the new battery inside (with the foam) and stick the connector into the same mounting (marked 'Akku').



7. **Warning: The connector has been designed so that the connector can only be fitted in one position. Do not try to insert the connector with force.**
8. Replace the lid. Do not clamp the cables.
9. Fasten the lid using the 4 screws.
10. Switch the battery switch on.
11. Load the battery as described in the SPOK manual.

**Do not throw your battery into the household waste bin. Dispose in a recycling container for such purposes.**